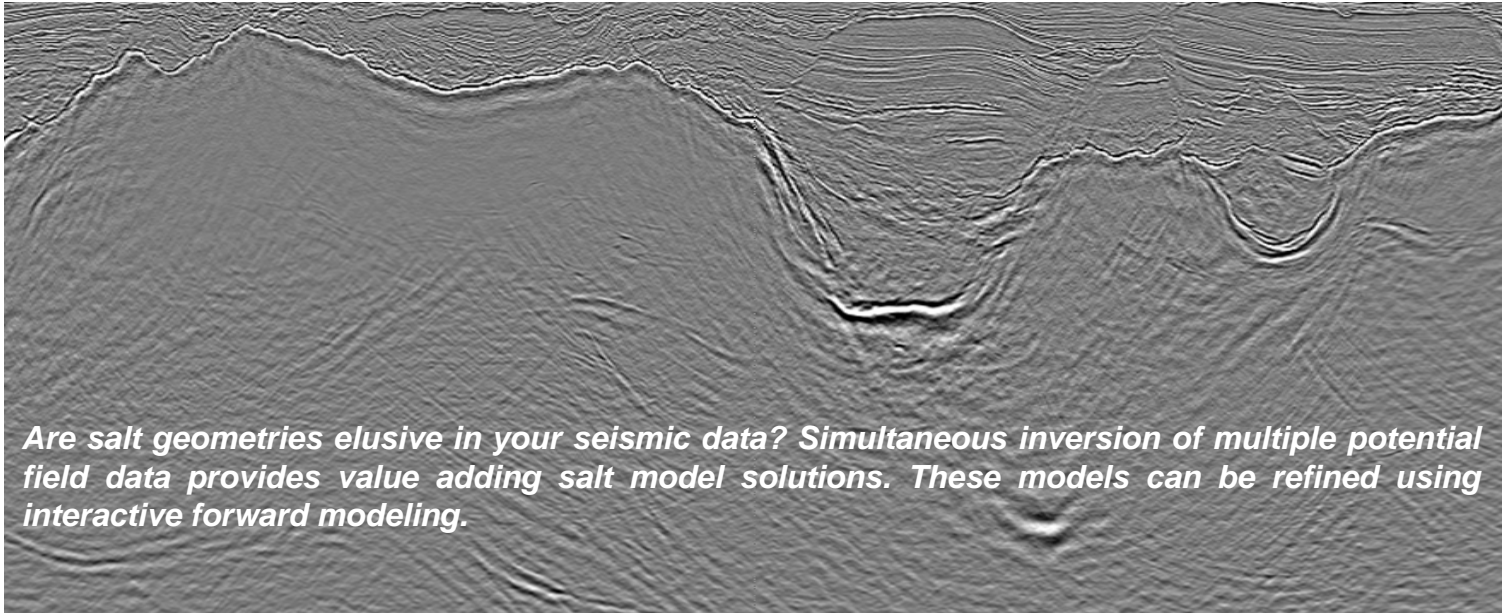
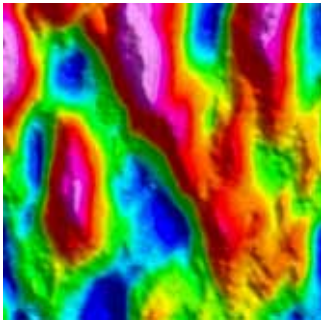


Simultaneous Inversion and Forward Modeling of Gravity, Tensor Gravity, and Magnetic Data for Imaging Salt Formations

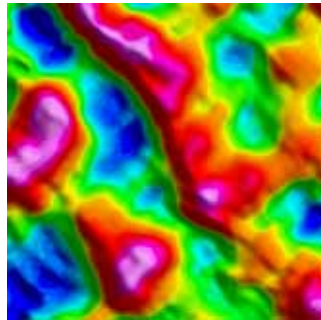


Are salt geometries elusive in your seismic data? Simultaneous inversion of multiple potential field data provides value adding salt model solutions. These models can be refined using interactive forward modeling.

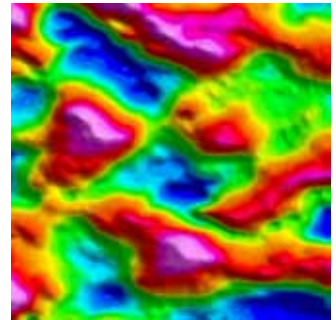
Tensor XX



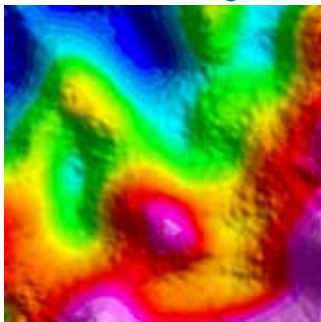
Tensor XY



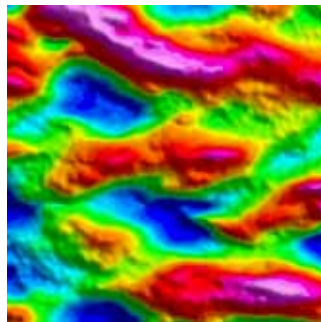
Tensor XZ



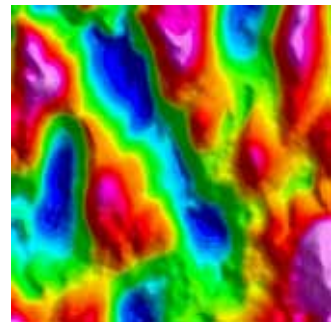
Gravity



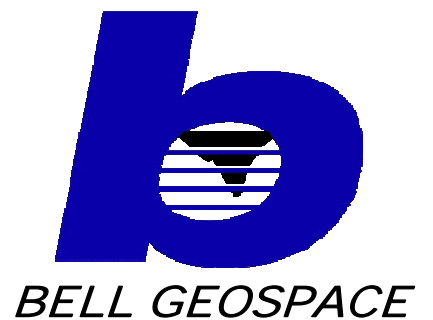
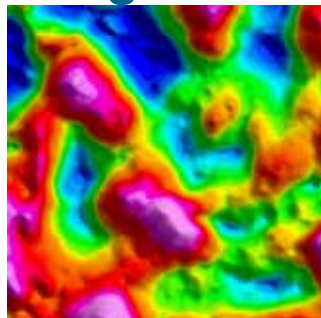
Tensor YY



Tensor YZ



Magnetics



RECOMMENDED WORK FLOW

Apply 3D Simultaneous Inversion

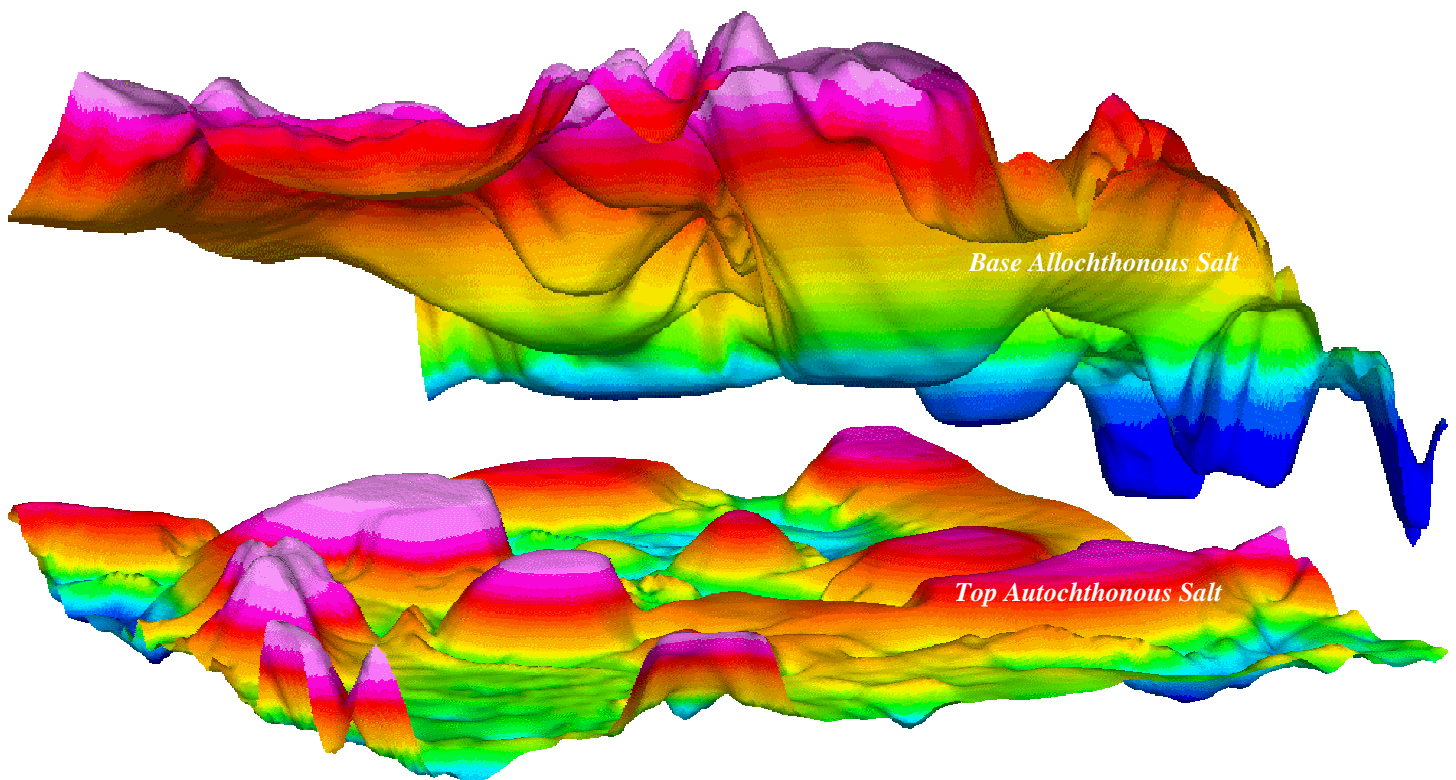
Integrate Inversion Results with Seismic Interpretation

Define Allochthonous Salt System

Examine Residual Fields to Model Autochthonous Salt System

Use Inversion Models to Construct 3D Forward Models

Interactive Refinement of 3D Forward Models



For more information contact:

John Mims
Bell Geospace
ph. 281-591-6900 x402
jmims@bellgeo.com

Greg Jorgensen
Flat Irons Geophysics
ph. 435-313-1950
gjorgensen@bellgeo.com

www.bellgeo.com